

Torque Handles

24710.0700



Product Description

Torque handles are used wherever a limitation of the exerted hand force is required. The handle, similar to a knurled nut / knurled thumb screw, with integrated torque mechanism allows a defined torque limit during tightening. Reaching the torque results in an "over-locking". For releasing the torque is transmitted indefinitely. These handles combine the functionality of a ratchet wrench with the modern and ergonomic design of a nurl nut / knurled thumb screw.

Material

Cap

- Thermoplastic PA 6, light grey, similar to RAL 7035

Torque mechanism

- Steel, hardened

Handle

- Aluminium, black anodised

Inner part

- Steel, blackened

Screw

- Steel, blackened

More information

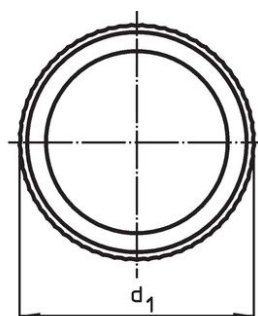
Further products

- Three-Lobed Torque Handles

Drawing



picture 1



picture 2



Order information

| Dimensions | | | | | | | max. [°C] | Tightening torque +/- 10% max. [Nm] | [g] | Art. No. |
|------------------------|----------------|----|----------------|----------------|----------------|----------------|--------------|--|-----|------------|
| d ₁ | d ₃ | l | d ₄ | d ₅ | h ₁ | h ₂ | | | | |
| [mm] | | | | | | | | | | |
| with screw – picture 2 | | | | | | | | | | |
| 62 | M10 | 25 | 19 | 33 | 54 | 15.5 | 100 | 5.5 | 266 | 24710.0700 |

Compliance

RoHS compliant

Contains lead - compliant according to exceptions 6a / 6b / 6c.

Contains SVHC substances >0,1% w/w

Contains lead - SVHC list [REACH] as of 23.01.2024.

Contains Proposition 65 substances



Lead can cause cancer and reproductive harm from exposure
<https://www.P65Warnings.ca.gov/>

Free from Conflict Minerals

This product does not contain any substances designated as "conflict minerals" such as tantalum, tin, gold or tungsten from the Democratic Republic of Congo or adjacent countries.