

## Tubular Handles • front mounting

24321.0110



### Product Description

Tubular handles are used, for example, on machine doors. These tubular handles made of aluminium are characterised by their ergonomic and robust construction and modern design. This version is equipped with angled handle legs (legs).

#### Material

##### Handle

- Aluminium, anodised

##### Handle shank

- Zinc die-cast, plastic coated, silver, similar to RAL 9006, matt structure

##### Cap

- Plastic, light grey

##### Covering

- Plastic, light grey

#### Assembly

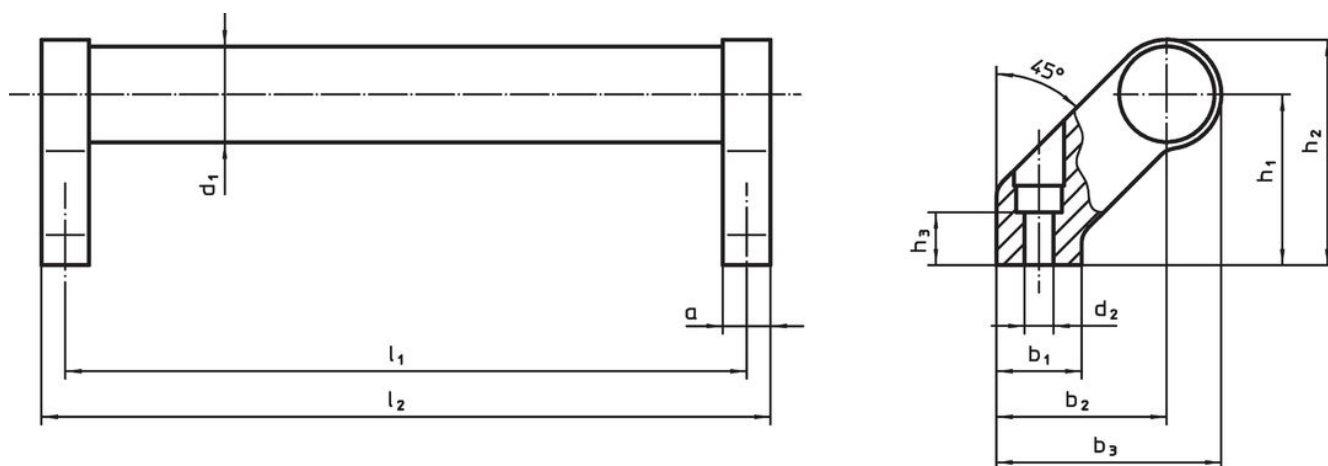
The handles can be mounted to the component from the front (operating side) using cylinder screws. The hole is closed with a plastic covering.

#### More information

#### Notes

Special types on request.

### Drawing



### Order information

Dimensions												Art. No.
d <sub>1</sub>	l <sub>1</sub> ±0.25	a	b <sub>1</sub>	b <sub>2</sub>	b <sub>3</sub>	d <sub>2</sub>	h <sub>1</sub>	h <sub>2</sub>	h <sub>3</sub> min.	l <sub>2</sub>	[g]	
[mm]												
silver												
28	300	14	25	50	66	6.5	50	66	17	314	448	24321.0110

## Compliance

### RoHS compliant

Contains lead - compliant according to exceptions 6a / 6b / 6c.

### Contains SVHC substances >0,1% w/w

Contains lead - SVHC list [REACH] as of 23.01.2024.

### Contains Proposition 65 substances



Lead can cause cancer and reproductive harm from exposure  
<https://www.P65Warnings.ca.gov/>

### Free from Conflict Minerals

This product does not contain any substances designated as "conflict minerals" such as tantalum, tin, gold or tungsten from the Democratic Republic of Congo or adjacent countries.