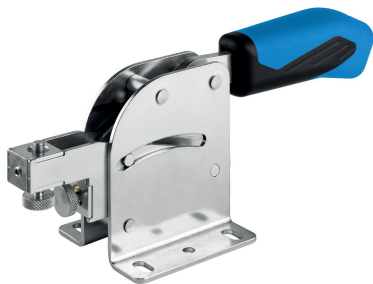


Combination Clamps • with horizontal base

23330.4002



Product Description

The combination clamp combines a toggle clamp push-pull type and a vertical toggle clamp in one clamp. Thus the use of different toggle clamps is not necessary. The horizontal and vertical clamping movement is achieved by simple operation using an ergonomic handle. Simultaneous exact positioning and secure clamping of the component is guaranteed.

The toggle clamps are manufactured from high quality components and are designed for maintenance-free continuous use.

An oil resistant ergonomic 2-component handle, with slip-proof, soft surface and large grip area for high ease of use.

Material

Clamp

- Steel, zinc-plated by galvanization, passivated

Rivet

- Stainless steel

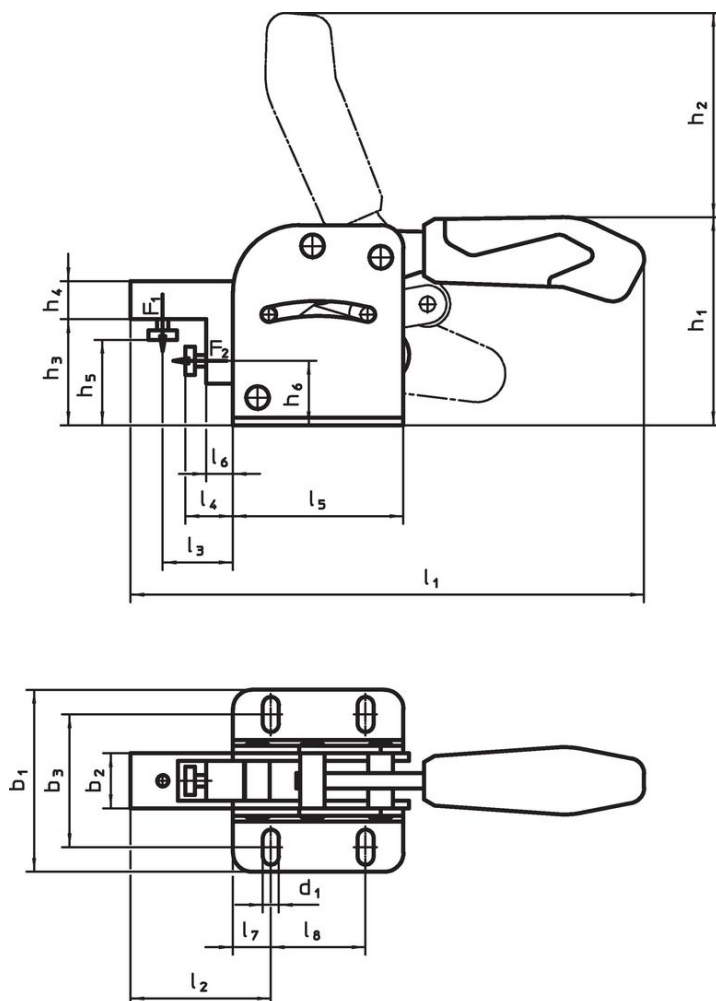
Handle



- plastic

Clamping screw

- Steel, tempered, zinc-plated by galvanization

Drawing



Order information																																					
Nominal size	Dimensions																				Holding force				Art. No.												
	d ₁	b ₁	b ₂	b ₃	h ₁	h ₂	h ₃	h ₄	h ₅	h ₅	h ₆	l ₁	l ₂	l ₃	l ₄	l ₄	l ₅	l ₆	l ₇	l ₈	F ₁	F ₂	min.	max.													
	[mm]																				[kN]		[°C]	[g]													
Steel																																					
2	5.5	53	17	34.5 – 39.5	74	62	36	12	25	32	22	150	33	15	5	10	55	0.5	7.5	40	1	1	-10	80	330	23330.4002											

Compliance																										
RoHS compliant																										
Compliant according to Directive 2011/65/EU and Directive 2015/863.																										
Does not contain SVHC substances																										
No SVHC substances with more than 0.1% w/w contained - SVHC list [REACH] as of 23.01.2024.																										
Does not contain Proposition 65 substances																										
No Proposition 65 substances included.																										
https://www.P65Warnings.ca.gov/																										
Free from Conflict Minerals																										
This product does not contain any substances designated as "conflict minerals" such as tantalum, tin, gold or tungsten from the Democratic Republic of Congo or adjacent countries.																										