

Eccentric Clamping Clamps
23270.0112



Product Description

These clamps have a high clamping force for low clamping heights. The body from brass provides a gentle but safe clamping.

Material

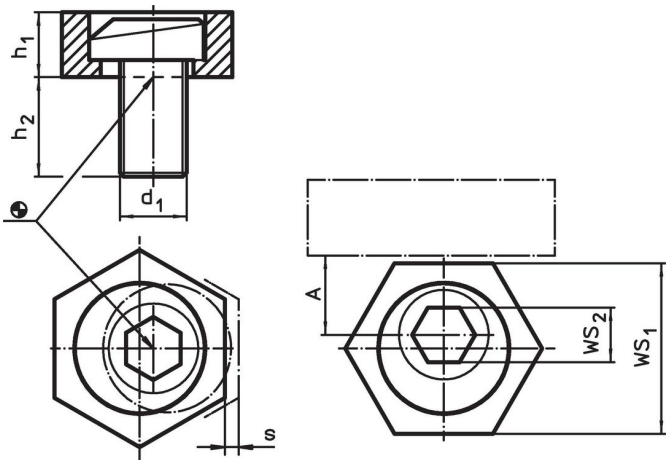
Eccentric screw

- Steel


Body

- Brass

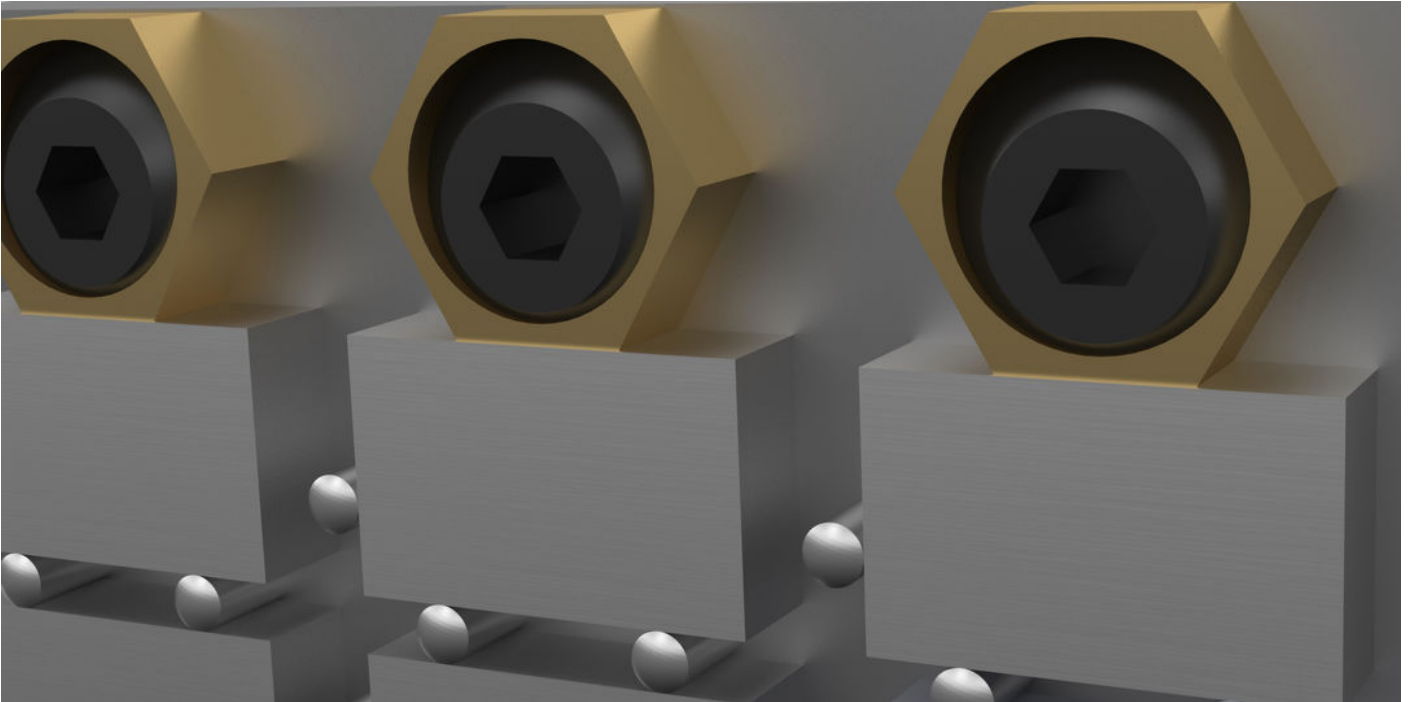
Drawing



Order information

Dimensions				A	WS		Clamping force max.	Tightening torque max.		Art. No.
d ₁	h ₁	h ₂	s		WS ₁	WS ₂				
[mm]					[mm]					
Brass										
M12	9.5	22.8	2	12.7	25.4	8	9	75	54	23270.0112

Application example



Compliance

Compliant according to Directive 2011/65/EU and Directive 2015/863.

No SVHC substances with more than 0.1% w/w contained - SVHC list [REACH] as of 23.01.2024.

No Proposition 65 substances included.
<https://www.P65Warnings.ca.gov/>