

Eccentric Clamping Clamps

23270.0110



Product Description

These clamps have a high clamping force for low clamping heights. The body from brass provides a gentle but safe clamping.

Material

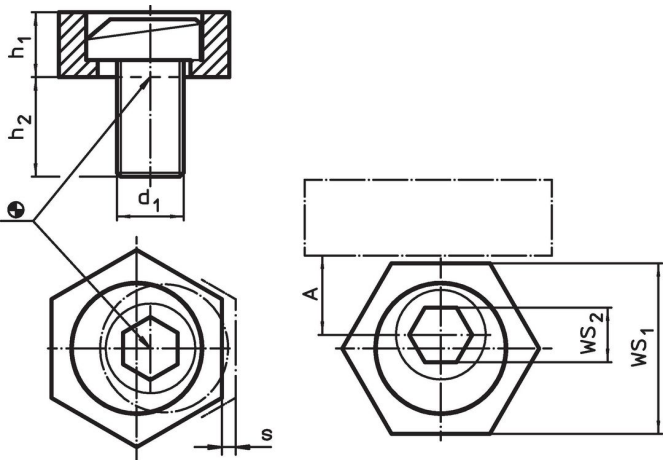
Eccentric screw

- Steel


Body

- Brass

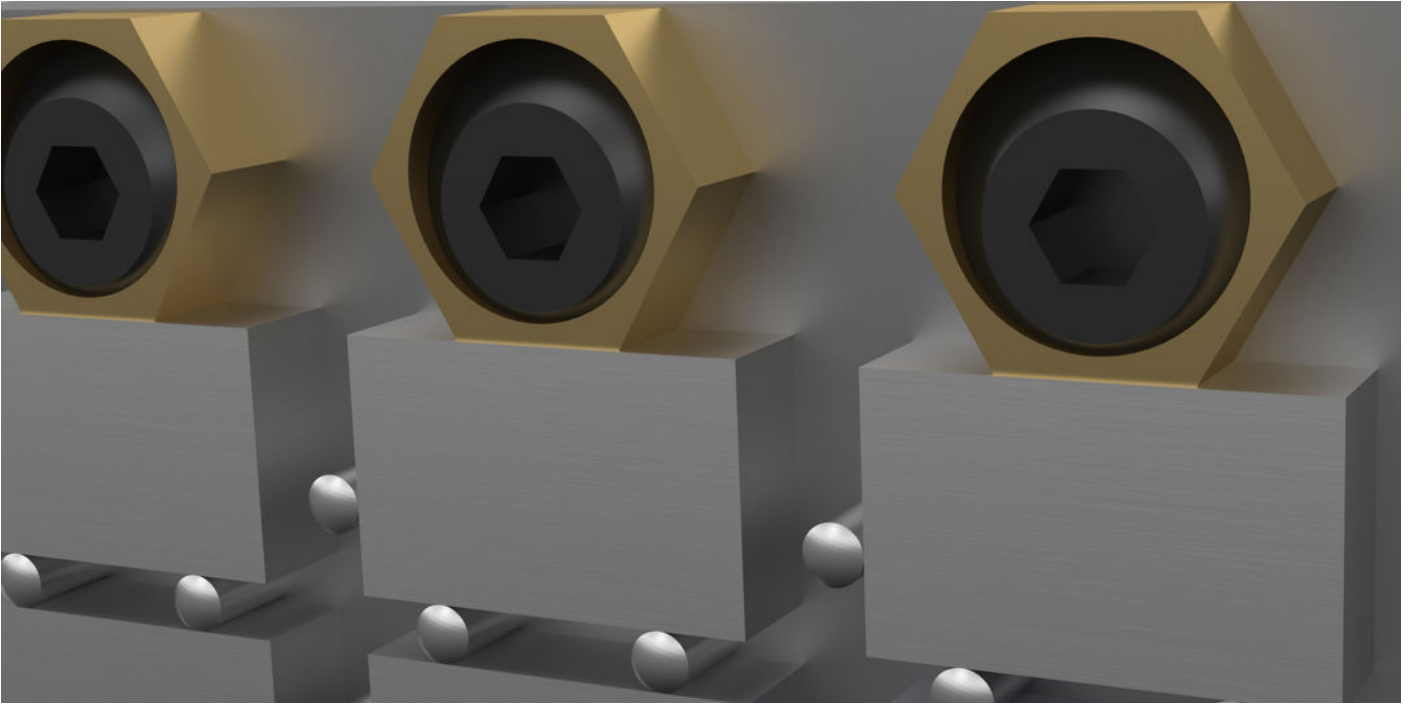
Drawing



Order information

Dimensions				A	WS		Clamping	Tightening		Art. No.
d ₁	h ₁	h ₂	s		WS ₁	WS ₂	force max.	torque max.		
[mm]				[mm]	[mm]		[kN]	[Nm]	[g]	
Brass										
M10	6.3	19	1.3	10.2	20.6	7	7	26	27	23270.0110

Application example



Compliance

Compliant according to Directive 2011/65/EU and Directive 2015/863.

No SVHC substances with more than 0.1% w/w contained - SVHC list [REACH] as of 23.01.2024.

No Proposition 65 substances included.
<https://www.P65Warnings.ca.gov/>