

Seating Pins • partially DIN 6321 (old norm)
22630.0008



Product Description

To be used as feet and stops.
The bearing surface has no centre.

Material

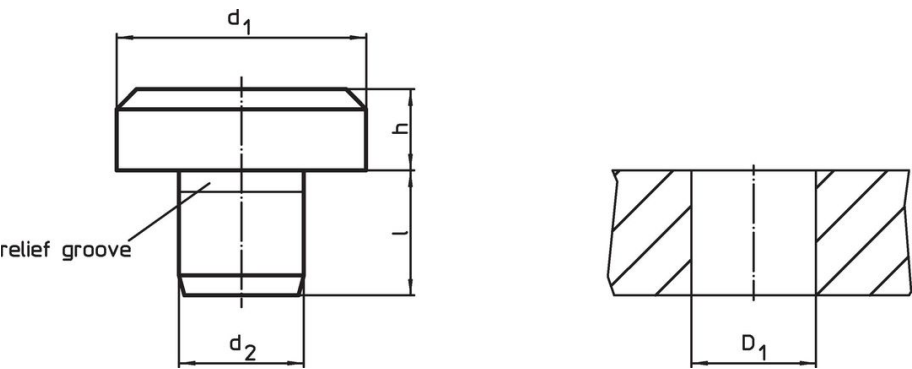
- Tool steel, hardened, ground

More information

Further products

- Seating Pins, DIN 6321

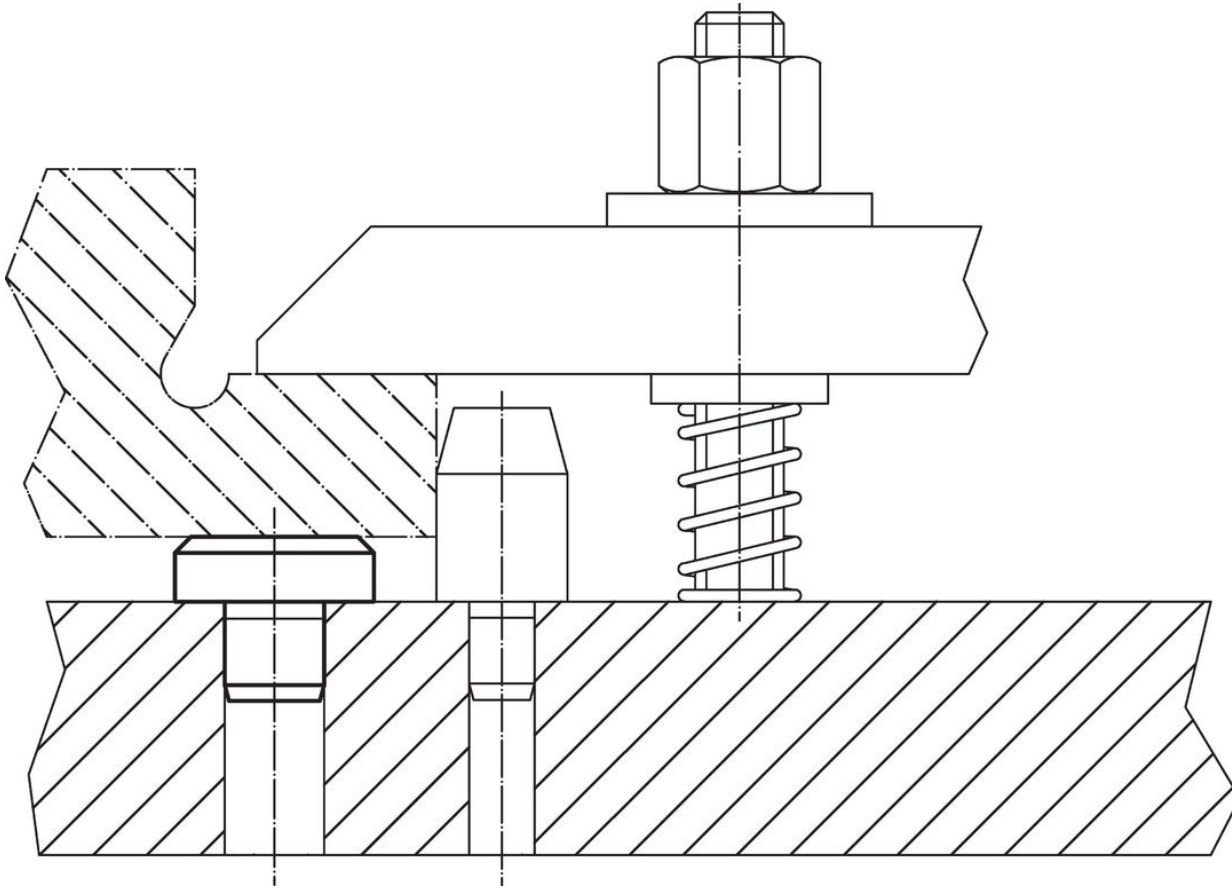
Drawing



Order information

Dimensions				Location hole		Art. No.
d ₁	h h9	d ₂ n6	l	D ₁ H7	[g]	
[mm]						
DIN 6321 old norm						
40	32	20	20	20	358	22630.0008

Application example



Compliance

RoHS compliant

Compliant according to Directive 2011/65/EU and Directive 2015/863.

Does not contain SVHC substances

No SVHC substances with more than 0.1% w/w contained - SVHC list [REACH] as of 23.01.2024.

Does not contain Proposition 65 substances

No Proposition 65 substances included.

<https://www.P65Warnings.ca.gov/>

Free from Conflict Minerals

This product does not contain any substances designated as "conflict minerals" such as tantalum, tin, gold or tungsten from the Democratic Republic of Congo or adjacent countries.