

Spring Plungers • with pin and internal hexagon
22030.0150



Product Description

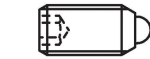
Spring plungers can be used for locating or for applying pressure, as a detent or for ejection.

Material

- Pin**
- Free cutting steel, hardened, blackened
- Body**
- Free cutting steel, blackened
- Spring**
- Stainless steel

Characteristic

Heavy spring load: marked with two lines



Standard spring load



Heavy spring load

More information

Notes

Special types on request.
Spring plungers are specially tested for spring range and forces.

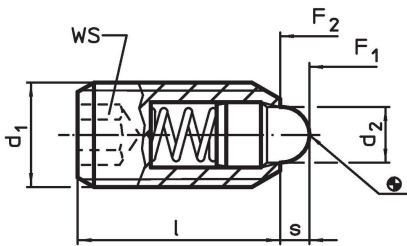
References

Thread lock on request, please refer to appendix - Technical Data -

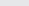
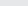
Further products

- Spring Plungers, with pin and internal hexagon - INCH

Drawing

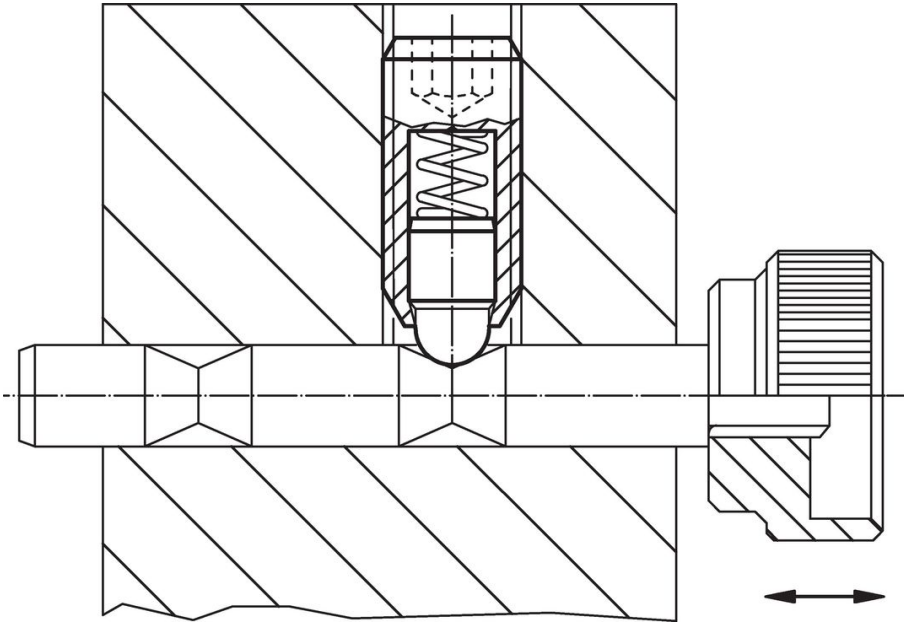


Order information

Dimensions			WS	Stroke s	Spring load ¹⁾				Art. No.
d ₁	d ₂	l			F ₁ ~	F ₂ ~	max.		
[mm]			[mm]	[mm]	[N]		[°C]	[g]	
free cutting steel, heavy spring load									
M10	4.5	23	5	2.5	20	54	250	8.4	22030.0150

¹⁾ statistical average value

Application example



Compliance

RoHS compliant

Contains lead - compliant according to exceptions 6a / 6b / 6c.

Contains SVHC substances >0,1% w/w

Contains lead - SVHC list [REACH] as of 23.01.2024.

Contains Proposition 65 substances



Lead can cause cancer and reproductive harm from exposure
<https://www.P65Warnings.ca.gov/>

Free from Conflict Minerals

This product does not contain any substances designated as "conflict minerals" such as tantalum, tin, gold or tungsten from the Democratic Republic of Congo or adjacent countries.