

Adjustable Clamping Levers • with female thread

EH 24400.



Product Description

Adjustable clamping levers find versatile applications when the area of use is confined or a specific lever position is required.

Material

Lever

- Zinc die-cast, plastic coated, orange similar to RAL 2004, matt structure
- Zinc die-cast, plastic coated, silver, similar to RAL 9006, matt structure
- Zinc die-cast, plastic coated, black, similar to RAL 9005, matt structure

Threaded part

- Steel, blackened, quality 5

Inner parts

- Steel, blackened, quality 5.8

Operation

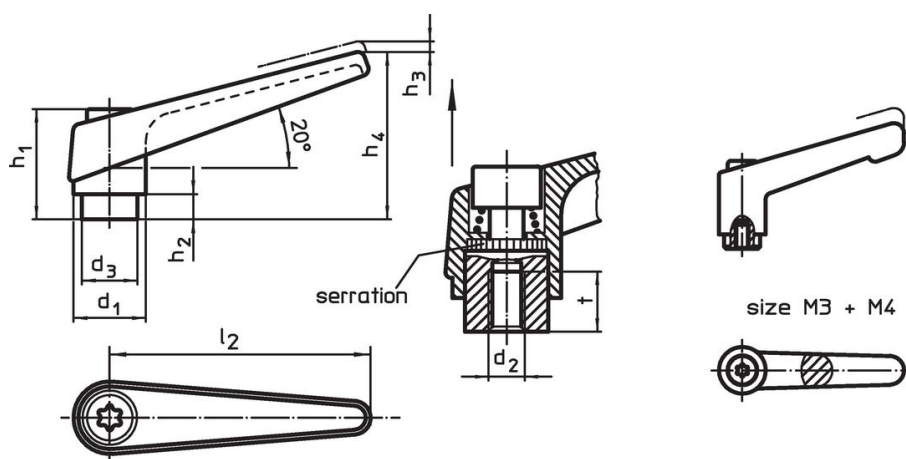
By lifting the lever the serrations are disengaged. The lever can be positioned by the serrations. On releasing the lever, the serrations are automatically re-engaged.

More information

Notes


The threaded portion can be exchanged.

Drawing

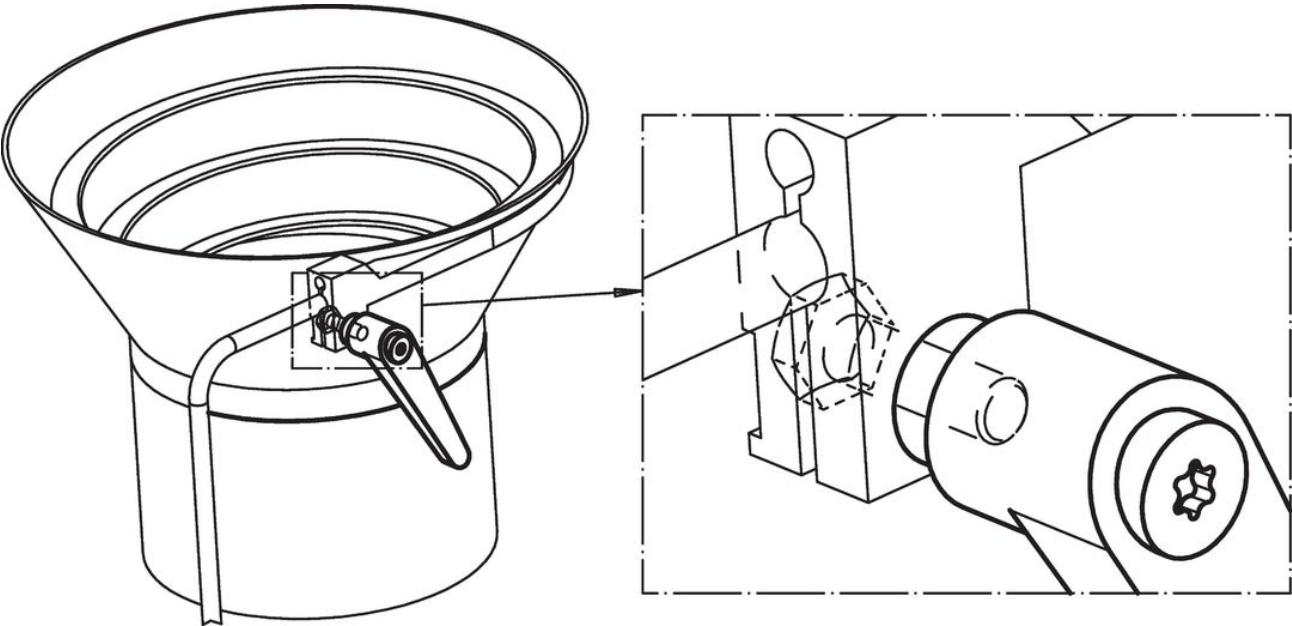


Order information

Dimensions											Art. No.
d ₁	d ₂	d ₃	h ₁	h ₂	h ₃	h ₄	l ₂	t	≥		
[mm]										[g]	
orange											
13	M 3	10.0	24.5	4.0	3.5	30.5	30	7	26		24400.0032
13	M 4	10.0	24.5	4.0	3.5	30.5	30	9	25		24400.0036
14	M 5	10.0	24.5	4.0	3.0	35.0	45	8	33		24400.0111
14	M 6	10.0	24.5	4.0	3.0	35.0	45	8	33		24400.0121
18	M 6	13.5	31.0	6.5	3.0	45.0	62	10	67		24400.0311
18	M 8	13.5	31.0	6.5	3.0	45.0	62	10	71		24400.0321
22	M 8	16.0	36.0	8.0	3.5	52.0	74	14	112		24400.0411
22	M10	16.0	36.0	8.0	3.5	52.0	74	14	109		24400.0421
25	M10	19.0	43.0	11.0	4.0	63.0	89	17	176		24400.0511
25	M12	19.0	43.0	11.0	4.0	63.0	89	17	171		24400.0521
30	M12	23.0	50.5	12.0	5.0	76.0	108	22	286		24400.0611
30	M16	23.0	50.5	12.0	5.0	76.0	108	22	269		24400.0621
silver											
14	M 5	10.0	24.5	4.0	3.0	35.0	45	8	33		24400.0113
14	M 6	10.0	24.5	4.0	3.0	35.0	45	8	33		24400.0123
18	M 6	13.5	31.0	6.5	3.0	45.0	62	10	67		24400.0313
18	M 8	13.5	31.0	6.5	3.0	45.0	62	10	71		24400.0323
22	M 8	16.0	36.0	8.0	3.5	52.0	74	14	112		24400.0413

Dimensions										Art. No.
d ₁	d ₂	d ₃	h ₁	h ₂	h ₃	h ₄	l ₂	t ≥		
[mm]										
22	M10	16.0	36.0	8.0	3.5	52.0	74	14	109	24400.0423
25	M10	19.0	43.0	11.0	4.0	63.0	89	17	176	24400.0513
25	M12	19.0	43.0	11.0	4.0	63.0	89	17	171	24400.0523
30	M12	23.0	50.5	12.0	5.0	76.0	108	22	286	24400.0613
30	M16	23.0	50.5	12.0	5.0	76.0	108	22	269	24400.0623
black										
13	M 3	10.0	24.5	4.0	3.5	30.5	30	7	26	24400.0034
13	M 4	10.0	24.5	4.0	3.5	30.5	30	9	25	24400.0038
14	M 5	10.0	24.5	4.0	3.0	35.0	45	8	33	24400.0114
14	M 6	10.0	24.5	4.0	3.0	35.0	45	8	33	24400.0124
18	M 6	13.5	31.0	6.5	3.0	45.0	62	10	67	24400.0314
18	M 8	13.5	31.0	6.5	3.0	45.0	62	10	71	24400.0324
22	M 8	16.0	36.0	8.0	3.5	52.0	74	14	112	24400.0414
22	M10	16.0	36.0	8.0	3.5	52.0	74	14	109	24400.0424
25	M10	19.0	43.0	11.0	4.0	63.0	89	17	176	24400.0514
25	M12	19.0	43.0	11.0	4.0	63.0	89	17	171	24400.0524
30	M12	23.0	50.5	12.0	5.0	76.0	108	22	286	24400.0614
30	M16	23.0	50.5	12.0	5.0	76.0	108	22	269	24400.0624

Application example



Compliance

RoHS compliant

Contains lead - compliant according to exceptions 6a / 6b / 6c.

Contains SVHC substances >0,1% w/w

Contains lead - SVHC list [REACH] as of 23.01.2024.

Contains Proposition 65 substances



Lead can cause cancer and reproductive harm from exposure
<https://www.P65Warnings.ca.gov/>

Free from Conflict Minerals

This product does not contain any substances designated as "conflict minerals" such as tantalum, tin, gold or tungsten from the Democratic Republic of Congo or adjacent countries.