

Self-Aligning Pads • adjustable

EH 22740.



Product Description

Self-aligning pads are used as stop, support and thrust pad and are suitable for installation in clamping elements.

Material

Ball

- Ball-bearing steel, hardened, bright
- Stainless steel 1.3541, nickel-plated

Body

- Heat-treated steel, tempered, phosphated
- Stainless steel 1.4057, heat-treated

Nut

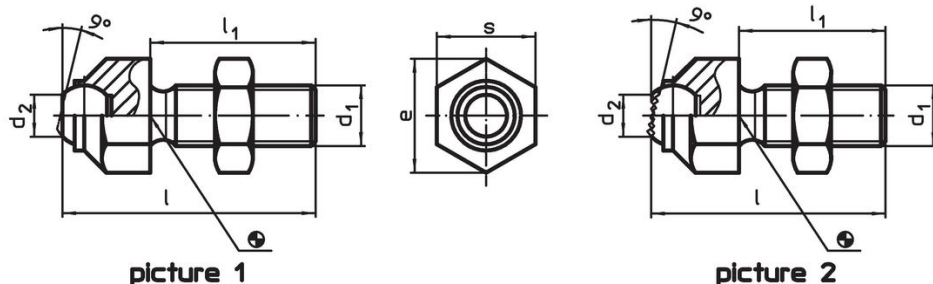
- Steel, blackened (ISO 4035)
- Stainless steel

More information


Notes

Ball protected against rotating.
Loading capacity valid for steel and stainless steel designs.
Special types on request.

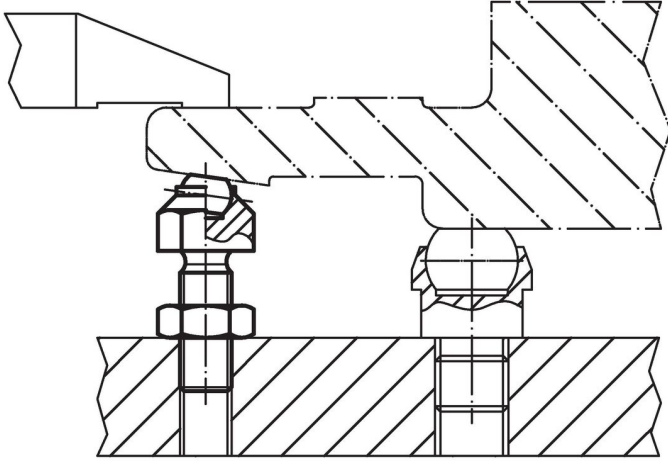
Drawing



Order information

d ₁	l	Dimensions			e	Ball diameter	Load capacity for static load max. [kN]	Tightening torque max. [Nm]	 [g]	Art. No.
		l ₁	d ₂	[mm]						
with flat-faced ball, bearing surface plain – picture 1, Heat-treated steel										
M 8	36.6	25	5.8	14.5	8.5	8	25	20	22740.0013	
M10	45.7	30	8.6	19.0	12.0	8	46	44	22740.0016	
M12	50.7	35	8.6	19.0	12.0	15	82	57	22740.0017	
M16	60.7	40	10.5	27.0	16.0	25	206	131	22740.0024	
M20	77.3	50	20.0	33.0	25.0	90	407	277	22740.0030	
M24	100.0	70	20.0	40.0	25.0	90	698	471	22740.0036	
M30 x 1,5	100.0	65	34.6	51.0	40.0	165	1355	975	22740.0046	
with flat-faced ball, bearing surface plain – picture 1, Stainless steel										
M 8	36.6	25	5.8	14.5	8.5	8	25	20	22740.0113	
M10	45.7	30	8.6	19.0	12.0	8	46	44	22740.0116	
M12	50.7	35	8.6	19.0	12.0	15	82	57	22740.0117	
M16	60.7	40	10.5	27.0	16.0	25	206	131	22740.0124	
M20	77.3	50	20.0	33.0	25.0	90	407	277	22740.0130	
M24	100.0	70	20.0	40.0	25.0	90	698	471	22740.0136	
M30 x 1,5	100.0	65	34.6	51.0	40.0	165	1355	975	22740.0146	
with flat-faced ball, bearing surface ribbed – picture 2, Heat-treated steel										
M 8	36.6	25	5.8	14.5	8.5	8	25	20	22740.0313	
M10	45.7	30	8.6	19.0	12.0	8	46	44	22740.0316	
M12	50.7	35	8.6	19.0	12.0	15	82	56	22740.0317	
M16	60.7	40	10.5	27.0	16.0	25	206	130	22740.0324	
M20	77.3	50	20.0	33.0	25.0	90	407	276	22740.0330	
M24	100.0	70	20.0	40.0	25.0	90	698	472	22740.0336	
M30 x 1,5	100.0	65	34.6	51.0	40.0	165	1355	920	22740.0346	

Application example



Compliance

RoHS compliant

Compliant according to Directive 2011/65/EU and Directive 2015/863.

Does not contain SVHC substances

No SVHC substances with more than 0.1% w/w contained - SVHC list [REACH] as of 23.01.2024.

Does not contain Proposition 65 substances

No Proposition 65 substances included.

<https://www.P65Warnings.ca.gov/>

Free from Conflict Minerals

This product does not contain any substances designated as "conflict minerals" such as tantalum, tin, gold or tungsten from the Democratic Republic of Congo or adjacent countries.