

Eccentric Clamping Clamps

23270.0116



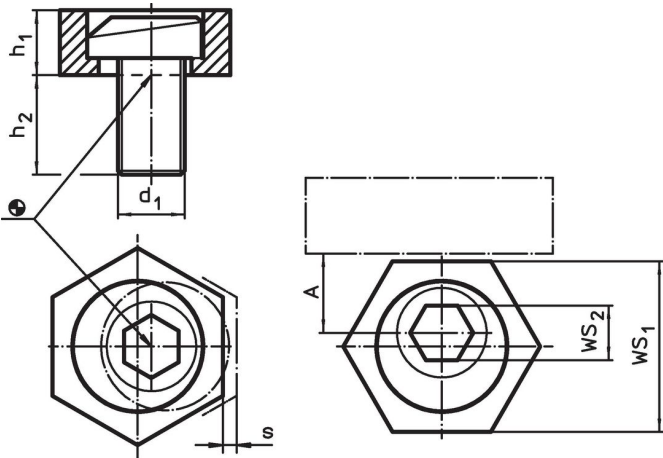
Product Description

These clamps have a high clamping force for low clamping heights. The body from brass provides a gentle but safe clamping.


Material

- Eccentric screw
- Steel
- Body
- Brass

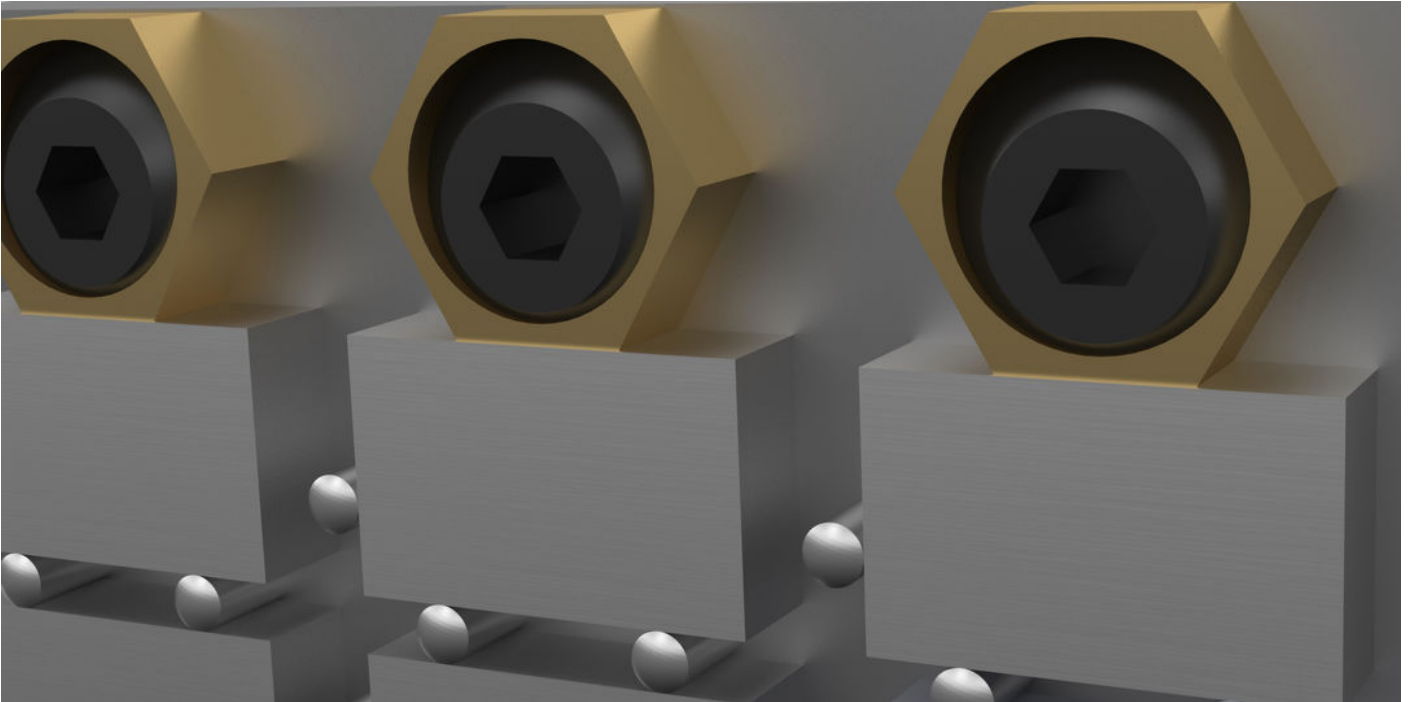
Drawing



Order information

| Dimensions | | | | A | WS | | Clamping force max. | Tightening torque max. |  | Art. No. |
|----------------|----------------|----------------|-----|------|-----------------|-----------------|---------------------------|------------------------------|---|------------|
| d ₁ | h ₁ | h ₂ | s | | WS ₁ | WS ₂ | | | | |
| [mm] | | | | [mm] | [mm] | | [kN] | [Nm] | [g] | |
| Brass | | | | | | | | | | |
| M16 | 12.7 | 28.5 | 2.5 | 15 | 30.13 | 12 | 12 | 120 | 108 | 23270.0116 |

Application example



Compliance

Compliant according to Directive 2011/65/EU and Directive 2015/863.

No SVHC substances with more than 0.1% w/w contained - SVHC list [REACH] as of 23.01.2024.

No Proposition 65 substances included.
<https://www.P65Warnings.ca.gov/>