

Mounting Elements

1612.200

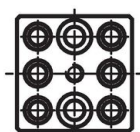
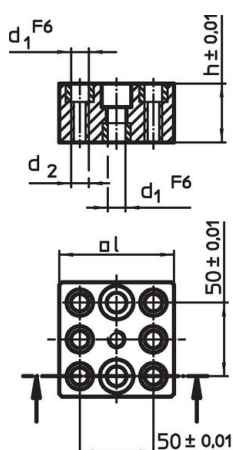


Product Description

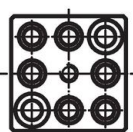
Material

- Grey cast iron, ground

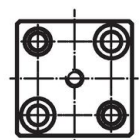
Drawing



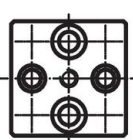
1512.000



1512.100




1612.200



1612.400

Order information

System	Dimensions				 [g]	Art. No.
	l	h	d ₁ [mm]	d ₂		
L16	90	50	16	M16	2645	1612.200

Compliance

RoHS compliant

Compliant according to Directive 2011/65/EU and Directive 2015/863.

Does not contain SVHC substances

No SVHC substances with more than 0.1% w/w contained - SVHC list [REACH] as of 23.01.2024.

Does not contain Proposition 65 substances

No Proposition 65 substances included.

<https://www.P65Warnings.ca.gov/>

Free from Conflict Minerals

This product does not contain any substances designated as "conflict minerals" such as tantalum, tin, gold or tungsten from the Democratic Republic of Congo or adjacent countries.