

NOVELTIES**CATALOGUE STANDARD PARTS N6**

ERWIN HALDER KG

MADE IN GERMANY

We have been serving customers in industry and retail as a reliable and proficient partner for more than 80 years. The latest chapters in the success story of this family-owned and operated business are now written by the family's third generation. Never wavering from its original mission statement, the company has remained in charge of the entire process chain – from development to production to global distribution. Remaining true to the company's original calling as instilled by our founder, we still strive to offer our customers products and service of unrivalled quality.



KNOW-HOW

Quality and service ensured by the manufacturer

Our long years of experience have put us in a position that allows us offer you the advice and expertise necessary to implement the custom solution that fits your needs best! Our continually growing standard selection currently includes more than 12,000 items.



QUALITY

Your partner for all types of scenarios

You cannot make high-precision products without relying on high-precision production equipment. Our use of cutting-edge machine tools made by renowned manufacturers and operated by highly trained specialists is your guarantee for quality products that satisfy the highest standards.



SERVICE

Delivery promise

All orders received by 4:00pm will leave our factory on the same day.

Delivery dependability

We deliver 98.4 % of all orders received by the confirmed date.

Order hotline

Just tell us what you need.
And, we will take care of the rest!
Phone +49 7392 7009-333

EXPLORE SOMETHING NEW

On the following pages we show the whole variety of new and innovative products of our company. With the new developments and extensions we have focused on your requirements. Tailor-made products for your applications are developed in close dialogue with you.

Get surprised! Browse through this overview of novelties and find more detailed information about the products in our new catalogue.



ORANGE IS THE NEW THREAD

THREADED LIFTING PINS



EASY
FAST

INSERT
DIRECTLY IN THE THREAD

BEARS UP TO
1,000 kg

SAFE
ROBUST

UNLOCK BY PRESSING THE BUTTON

TIME SAVING

WITH A THREAD

SAVE TIME

NEW



THE ALL-ROUNDERS

CLAMP LOCK PINS

DURABLE

LOCKING + ADJUSTING

CORROSION-RESISTANT

SELF-LOCKING

AT THE TOUCH OF A BUTTON

FAST & EASY

NO TOOLS NEEDED

SAFETY



LOCKS EVEN IN BLIND BORES

AS WELL AS IN
THROUGH BORINGS

NEW



EVERYTHING UNDER CONTROL

RETRIEVAL SYSTEMS

POSITION SENSING

SIGNAL INTERFACE

WORKPIECE MONITORING

PROCESS MONITORING

DATA TRANSFER

CONNECTED

WIRELESS

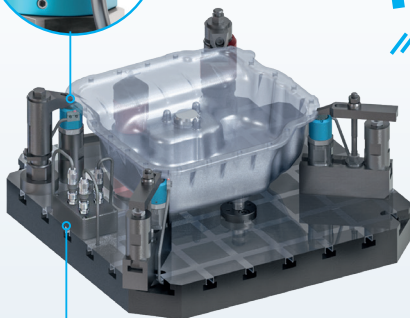
PROCESS MONITORING

MADE EASY



Monitoring unit
with sensor

NEW



Wireless
transmitter



Wireless receiver
(antenna + receiver)

CLAMPED TO EXACTLY THE RIGHT SPOT

DOWN-THRUST CLAMPS MOVEABLE

POSITIONING

WITHOUT SWIVEL MOVEMENT

EASY CLAMPING

IN POCKETS
AND SLOTS

MOVEABLE

CLAMPING CLAW

PUSH INSTEAD OF SWIVEL

NEW



COMPLICATED AND SENSITIVE? NO PROBLEM.

FLOATING CLAMPS



HIGH SUPPORTING POWER

SUPPORT
OF ADDITIONAL CLAMPING POINTS

ACCURATE POSITIONING
NO CHATTER MARKS

CONTINUOUSLY ADJUSTABLE
CLAMPING RANGE

DISTORTION-LOW

ANTI-VIBRATION

CLAMPING
FOR CHALLENGING WORKPIECES

COMPACT

CONSTRUCTION

NEW



FULL CLAMPING FORCE...

TOGGLE CLAMPS

HIGH
EASE OF USE

EASY ACTION

SIMPLY CLEVER
THE “TOGGLE” PRINCIPLE

WITH RETAINER

CLAMPING FORCE

2-COMPONENT HANDLE

EXTRA EASY

CLAMP PARTS –
SECURELY AND WITHOUT EFFORT

NEW



MACHINE AND FIXTURE ELEMENTS

Spring Plungers

EH 22030.

Spring Plungers
with ball and internal hexagon



→ p. 49

EXTENSION SPRING LOAD

EH 22030.

Spring Plungers
headed, with ball and internal hexagon



→ p. 53

EXTENSION SPRING LOAD

EH 22050.

Spring Plungers
with ball and slot



→ p. 58

EXTENSION SPRING LOAD

EH 22050.

Spring Plungers
with ceramic ball and slot,
stainless steel A4



→ p. 60

EXTENSION SPRING LOAD

EH 22050.

Spring Plungers
headed, with ball and slot



→ p. 63

EXTENSION SPRING LOAD

EH 22070.

Spring Plungers
smooth



→ p. 71

EXTENSION MATERIAL

EH 22070.

Spring Plungers

long



→ p. 72

EXTENSION MATERIAL

EH 22080.

Spring Plungers

smooth, long, with collar and ball



→ p. 76

NEW IN OUR RANGE

EH 22080.

Spring Plungers

smooth, without collar



→ p. 79

EXTENSION SPRING LOAD

EH 22082.

Holder

for spring plungers



→ p. 81

NEW IN OUR RANGE

EH 2B080.

Spring Plungers

smooth, with collar and ball,
self-clamping – INCH



→ p. 94

NEW IN OUR RANGE

Index Plungers

EH 22110.

Mounting Blocks
for index bolts and index
plungers, die-cast



→ p. 109

NEW SIZE

EH 22110.

Positioning Bushings
for index bolts and index
plungers



→ p. 112

NEW IN OUR RANGE

EH 22122.

Index Plungers
with release lock



→ p. 130

NEW IN OUR RANGE

EH 22122.

Index Plungers
with rapid locking head



→ p. 131

NEW IN OUR RANGE

Lifting Pins / Threaded Lifting Pins

EH 22330.

Ball Lock Connectors
self-locking, with holder,
compact construction



→ p. 183

NEW IN OUR RANGE

EH 22350.

**Locating Bushings with
Seal, plain**
for lifting pins



→ p. 195

NEW IN OUR RANGE

EH 22352.

Threaded Lifting Pins
self-locking



→ p. 199

NEW IN OUR RANGE

Ball Lock Pins

EH 22390.

Ball Lock Pins

self-locking, with standard handle, titanium



→ p. 222

NEW IN OUR RANGE

EH 22410. / EH 22420.

Ball Lock Pins

with button handle



→ p. 241

NEW IN OUR RANGE

Grub Screws / Thrust Pads

EH 22540.

Grub Screws

DIN 6332 with thrust point



→ p. 255

EXTENSION MATERIAL

EH 22560.

Thrust Pads

DIN 6311 and low model



→ p. 257

EXTENSION MATERIAL

Mounting Pads / Fulcrum Screws

EH 22590.

Mounting Pads

protected against slipping

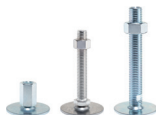


→ p. 262

NEW IN OUR RANGE

EH 22593.

Support Legs



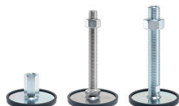
→ p. 266

NEW IN OUR RANGE

EH 22593.

Support Legs

protected against slipping



→ p. 269

NEW IN OUR RANGE

EH 22594.

Support Legs

impact cushioning



→ p. 272

NEW IN OUR RANGE

Locating and Seating Elements

EH 22600.

Seating Elements

with plastic contact surface,
orienting



→ p. 273

NEW IN OUR RANGE

EH 22691.

Pins

with plastic contact surface



→ p. 292

NEW IN OUR RANGE

Ball Elements / Push Plungers

EH 22720.

Ball-Ended Thrust Screws

headless, round ball and
hexalobular socket



→ p. 309

NEW IN OUR RANGE

EH 22720.

Ball-Ended Thrust Screws

headless, flat-faced ball and
hexalobular socket



→ p. 310

NEW IN OUR RANGE

Ball Casters

EH 22751.

Ball Casters

plastic



→ p. 326

NEW IN OUR RANGE

EH 22752.

Ball Casters

screwable, plain bearing



→ p. 327

NEW IN OUR RANGE

EH 22753.

Ball Casters

plain bearing



→ p. 328

NEW IN OUR RANGE

Retrieval Systems

EH 22800.

Positioning Sensors
self-aligning, pneumatic



→ p. 331

EXTENSION VERSION

EH 22800.

**Monitoring Units for
Positioning Sensors**
pneumatic



→ p. 333

NEW IN OUR RANGE

EH 22810.

Polling Units
with sensor



→ p. 336

NEW IN OUR RANGE

EH 22810.

Radio Transmitters
for polling unit



→ p. 338

NEW IN OUR RANGE

EH 22810.

Radio Receivers
for polling unit



→ p. 339

NEW IN OUR RANGE

Rod Ends

EH 22982.

Rod Ends
DIN 12240-4, with male
thread



→ p. 355

NEW IN OUR RANGE

EH 22982.

Rod Ends
DIN 12240-4, with female
thread



→ p. 357

NEW IN OUR RANGE

CLAMPING ELEMENTS

Clamps

EH 23190.

Clamps

with exchangeable soft jaw



→ p. 416

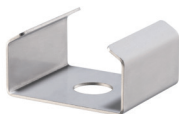
NEW IN OUR RANGE

Horizontal Clamping Elements

EH 23250.

Coverings

for taper clamping units



→ p. 450

NEW IN OUR RANGE

Floating Clamps

EH 23320.

Floating Clamps

compact construction,
combined clamping and
locking M 12



→ p. 462

NEW IN OUR RANGE

EH 23320.

Floating Clamps

compact construction,
separate clamping and
locking M 12



→ p. 465

NEW IN OUR RANGE

Push-Pull Clamps

EH 23260.

Clamping Devices „actima“



→ p. 478

EXTENSION VERSION

Down-Thrust Clamps

EH 23310.

Down-Thrust Clamps

moveable, size 40



→ p. 502

NEW IN OUR RANGE

EH 23310.

Height Adjusting Cylinders



→ p. 505

NEW SIZE

Toggle Clamps

EH 23330.

Vertical Toggle Clamps
with horizontal base / and
safety lock



→ S. 508 / 518

NEW IN OUR RANGE

EH 23330.

Vertical Toggle Clamps
with horizontal base and solid
support arm



→ S. 517

NEW IN OUR RANGE

EH 23330.

Vertical Toggle Clamps
with vertical base / and
safety lock



→ S. 510 / 514

NEW IN OUR RANGE

EH 23330.

Vertical Toggle Clamps
with vertical base and solid
support arm



→ S. 512

NEW IN OUR RANGE

EH 23330.

Vertical Toggle Clamps
with angle base / and
safety lock



→ S. 515 / 516

NEW IN OUR RANGE

EH 23330.

Horizontal Toggle Clamps
with horizontal base / and
safety lock



→ S. 519 / 523

NEW IN OUR RANGE

EH 23330.

Horizontal Toggle Clamps
with horizontal base,
increased holding force



→ S. 521

NEW IN OUR RANGE

EH 23330.

Horizontal Toggle Clamps
with horizontal base and solid
support arm



→ S. 522

NEW IN OUR RANGE

EH 23330.

Horizontal Toggle Clamps
with vertical base / and
safety lock



→ S. 524 / 526

NEW IN OUR RANGE

EH 23330.

Horizontal Toggle Clamps
with angle base



→ S. 527

NEW IN OUR RANGE

EH 23330.

**Toggle Clamps Push-Pull
Type**
with angle base



→ S. 528

NEW IN OUR RANGE

EH 23330.

**Toggle Clamps Push-Pull
Type**
with fastening thread

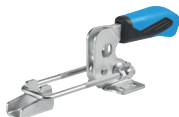


→ S. 530

NEW IN OUR RANGE

EH 23330.

Toggle Clamps Hook Type
with horizontal base



→ S. 531

NEW IN OUR RANGE

EH 23330.

Toggle Clamps Hook Type
vertical, with horizontal base



→ S. 533

NEW IN OUR RANGE

EH 23330.

Combination Clamps
with horizontal base



→ S. 534

NEW IN OUR RANGE

OPERATING ELEMENTS

Retaining Catches

EH 24101.
Retaining Catches
wing grip, one-sided



→ p. 558

NEW SIZE

Tubular Handles

EH 24321.
Tubular Handles



→ p. 566

NEW IN OUR RANGE

EH 24321.
Tubular Handles
front mounting



→ p. 567

NEW IN OUR RANGE

Operating Elements

EH 24331.
Crank Handles
with folding handle



→ p. 572

NEW IN OUR RANGE

EH 24331.
Crank Handles
with folding handle, stainless steel



→ p. 573

NEW IN OUR RANGE

Adjustable Clamping Levers

EH 24410.

Adjustable Clamping Levers
with clamping screw



→ p. 581

NEW IN OUR RANGE

Clamping Levers

EH 24441.

Adjustable Flat Clamping Levers



→ p. 591

NEW IN OUR RANGE

EH 24441.

Adjustable Flat Clamping Levers
stainless steel



→ p. 592

NEW IN OUR RANGE

EH 24441.

Adjustable Flat Clamping Levers
with screw



→ p. 593

NEW IN OUR RANGE

EH 24441.

Adjustable Flat Clamping Levers
with screw, stainless steel



→ p. 595

NEW IN OUR RANGE

Rotating Handles

EH 24532.

Folding Handles

rotating



→ p. 603

NEW IN OUR RANGE

MACHINE ELEMENTS

Tapered Shaft Elements

EH 25050.

Tapered Shaft Hubs
without lock nut, stainless
steel



→ p. 665

NEW MATERIAL

EH 25050.

Tapered Shaft Hubs
with lock nut, stainless steel



→ p. 668

NEW MATERIAL

Locking Nuts

EH 25030.

Clamping Nuts
self-locking



→ p. 677

NEW IN OUR RANGE

EH 25150.

Rubber Endstop Buffers
truncated cone form



→ p. 691

NEW IN OUR RANGE

EH 25151.

Rubber Endstop Buffers
truncated cone form



→ p. 692

NEW IN OUR RANGE

EH 25150.

Rubber Endstop Buffers
low structure



→ p. 693

NEW IN OUR RANGE

EH 25150.

Rubber Endstop Buffers
cylindrical, front mounting



→ p. 695

NEW IN OUR RANGE

EH 25160. **Hinges**



→ p. 696

NEW IN OUR RANGE

EH 25160. **Hinges** with mounting thread



→ p. 697

NEW IN OUR RANGE

EH 25160. **Hinges** with adjustable friction resistance



→ p. 698

NEW IN OUR RANGE

EH 25160. **Spacer Plates** for hinges



→ p. 699

NEW IN OUR RANGE

EH 25160. **Threaded Plates** for hinges



→ p. 700

NEW IN OUR RANGE

EH 25160. **Stops** for hinges



→ p. 701

NEW IN OUR RANGE

T-SLOT SYSTEMS

Mounting Elements

EH 1139.400 - EH 1139.500
Wrenches



[→ p. 748](#)

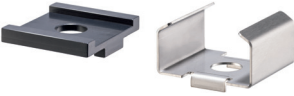
NEW SIZE

MULTIPLE CLAMPING SYSTEMS

Components

EH 23250.

Anti-Turn Locking Devices
for Taper Clamping Units
for clamping bars



→ p. 863

NEW IN OUR RANGE

EH 23250.

Stop Plates for Taper
Clamping Units
for clamping bars



→ p. 864

NEW IN OUR RANGE

EH 1586.

Lateral Stops



→ p. 865

EXTENSION VERSION

EH 1586.

Supports for Clamping Bar
magnetic

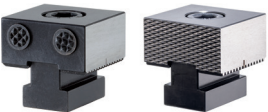


→ p. 868

NEW IN OUR RANGE

EH 1586.

Stops
ribbed



→ p. 874

EXTENSION VERSION



Erwin Halder KG
Erwin-Halder-Straße 5-9
88480 Achstetten-Bronnen
Germany

T +49 7392 7009-0
F +49 7392 7009-160
info@halder.com
www.halder.com

 **MADE IN
GERMANY.**



102.327