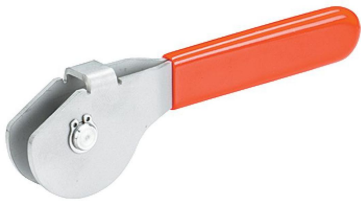


Eccentric Levers • with fulcrum pin
23390.0512



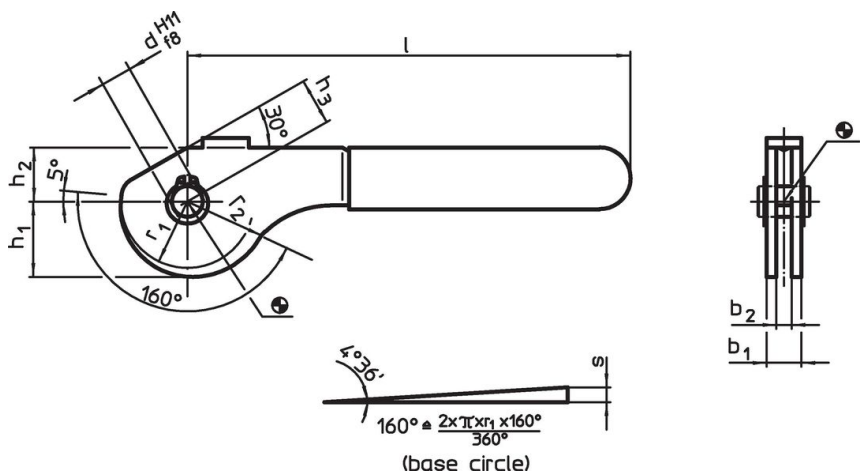
Product Description

The eccentric levers have an eccentric clamping range of 160°.

Material

- Fulcrum Pin**
- Stainless steel 1.4021, heat-treated
- Eccentric part**
- Stainless steel 1.4301
- Safety ring**
- Stainless steel 1.4310
- Plastic cap**
- PVC, red

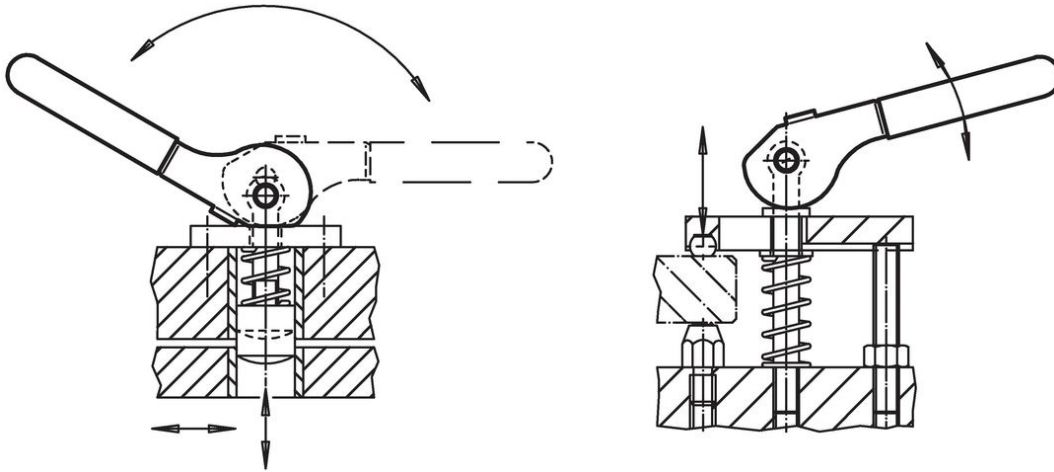
Drawing



Order information

Dimensions										Eccentric stroke	Total stroke	max.		Art. No.
b ₁	d H11 f8	l ~	r ₁	r ₂	b ₂	h ₁	h ₂	h ₃ ~		s	r ₂ -h ₃			
[mm]										[mm]	[mm]	[°C]	[g]	
Stainless steel														
20	12	157	28	34.29	14	31.81	21	18		6.29	16.29	60	290	23390.0512

Application example



Compliance

RoHS compliant

Compliant according to Directive 2011/65/EU and Directive 2015/863.

Does not contain SVHC substances

No SVHC substances with more than 0.1% w/w contained - SVHC list [REACH] as of 23.01.2024.

Does not contain Proposition 65 substances

No Proposition 65 substances included.

<https://www.P65Warnings.ca.gov/>

Free from Conflict Minerals

This product does not contain any substances designated as "conflict minerals" such as tantalum, tin, gold or tungsten from the Democratic Republic of Congo or adjacent countries.