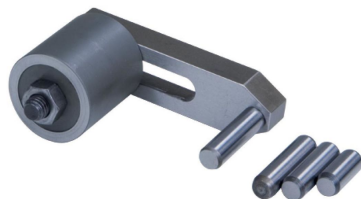


Workpiece Stops

1705.110



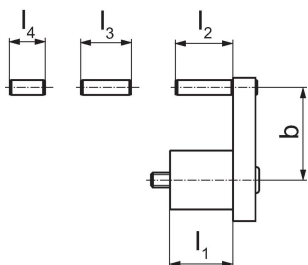
Product Description

- Can be mounted at the positions provided on both sides of the vice
- Fastening thread M 8
- Can be pre-mounted with various fixed dimensions
- Presettable position of the third axis of the workpiece

Material

- Steel, hardened

Drawing



Order information

Dimensions						[g]	Art. No.
b min.	b max.	l ₁	l ₂	l ₃	l ₄		
[mm]							
27	59	34	31	27	19	417	1705.110

Compliance

RoHS compliant

Compliant according to Directive 2011/65/EU and Directive 2015/863.

Does not contain SVHC substances

No SVHC substances with more than 0.1% w/w contained - SVHC list [REACH] as of 23.01.2024.

Does not contain Proposition 65 substances

No Proposition 65 substances included.

<https://www.P65Warnings.ca.gov/>

Free from Conflict Minerals

This product does not contain any substances designated as "conflict minerals" such as tantalum, tin, gold or tungsten from the Democratic Republic of Congo or adjacent countries.