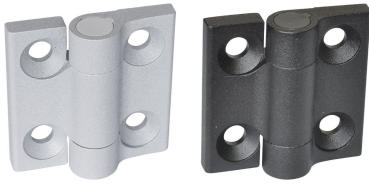


绞链 · Zinc die-cast, with indexing positions

EH 25164.



产品描述

Hinges from zinc die-cast with indexing positions hold door and covers in fixed positions. It avoids undesired automatic closing or opening. This is an advantage for example when filling machines and facilities or during maintenance and repairs.

The version with the indexing positions -3° and 117° (picture 2) also ensures that the door or cover presses slightly against the housing frame by the -3° when closed.

These hinges from zinc die-cast are characterised by their simple and timeless design.

材质

本体

- 锌压铸, 表面涂装, 银色, 类似 RAL 9006, 雾面
- 锌合金压铸、塑料涂层、黑色, 近似 RAL 9005 亚光结构

轴

- 不锈钢 1.4305

弹簧

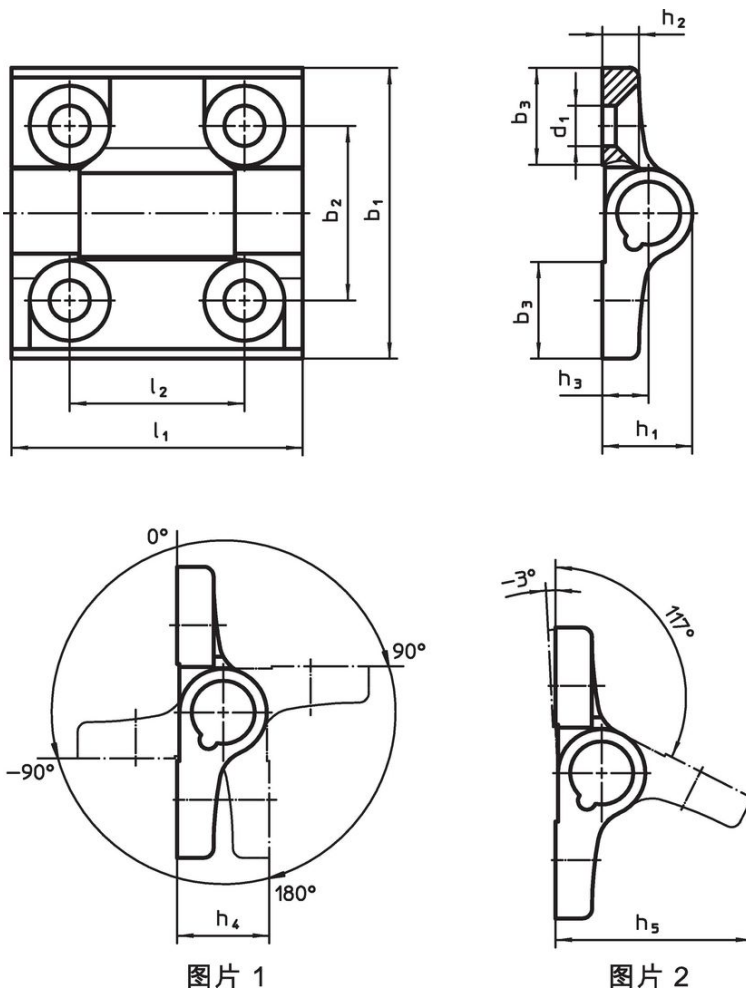
- 弹簧钢丝

更多信息

更多产品

- 分隔板, 用于绞链
- 螺纹板, 用于绞链

图面



图片 1

图片 2

订单信息

尺寸											max. [°C]	[g]	品号
b ₁	l ₁	b ₂	b ₃	d ₁	h ₁ [mm]	h ₂	h ₃	h ₄	h ₅	l ₂			
indexing positions -90°, 0°, 90° and 180° – 相片 1, 锌压铸, 银													
60	60	36	20	8,3	18,5	7,5	9,5	19	40,5	36	80	152	25164.0005
indexing positions -90°, 0°, 90° and 180° – 相片 1, 锌压铸, 黑色													
60	60	36	20	8,3	18,5	7,5	9,5	19	40,5	36	80	152	25164.0105
indexing positions -3° and 117° – 相片 2, 锌压铸, 银													
60	60	36	20	8,3	18,5	7,5	9,5	19	40,5	36	80	152	25164.0010
indexing positions -3° and 117° – 相片 2, 锌压铸, 黑色													
60	60	36	20	8,3	18,5	7,5	9,5	19	40,5	36	80	152	25164.0110

遵守

For detailed compliance information please select the desired article number.