

## Pallonupit • metalliset, kuten DIN 319

EH 24561.



### Tuotekuvaus

#### Materiaali

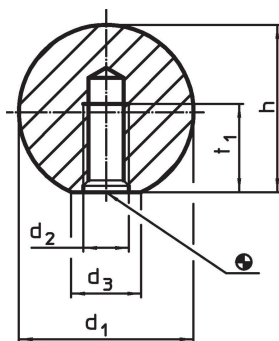
- Teräs, kiillotettu, kirkas
- Ruostumaton teräs 1.4305, himmeäksi puhallettu
- Alumiini, kiillotettu

#### Lisätietoja


#### Huomioi

Täydentää DIN 319 muoto C metallisilla vaihtoehtoilla.

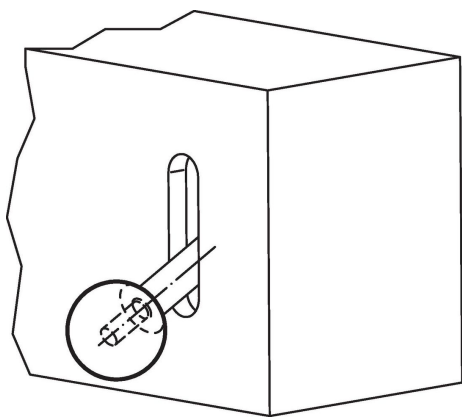
### Piirustus



### Tilaustiedot

| d <sub>1</sub>           | d <sub>2</sub> | Ulkomitat<br>d <sub>3</sub><br>~<br>[mm] | h<br>~ | t <sub>1</sub><br>min. | <br>[g] | Til.nro                    |
|--------------------------|----------------|--|--------|------------------------|---|----------------------------|
| <b>Teräs</b>             |                |  |        |                        |   |                            |
| 16                       | M 4            | 8  | 15,0   | 7,0                    | 16  | <a href="#">24561.0016</a> |
| 20                       | M 5            | 12                                       | 18,0   | 9,0                    | 26  | <a href="#">24561.0020</a> |
| 25                       | M 6            | 15                                       | 22,5   | 11,0                   | 58  | <a href="#">24561.0025</a> |
| 32                       | M 8            | 18                                       | 29,0   | 14,5                   | 116   | <a href="#">24561.0032</a> |
| 40                       | M10            | 22                                       | 37,0   | 18,0                   | 241   | <a href="#">24561.0040</a> |
| 50                       | M12            | 27                                       | 46,0   | 21,0                   | 475   | <a href="#">24561.0050</a> |
| <b>Ruostumaton teräs</b> |                |  |        |                        |   |                            |
| 16                       | M 4            | 8  | 15,0   | 7,0                    | 16  | <a href="#">24561.0216</a> |
| 20                       | M 5            | 12                                       | 18,0   | 9,0                    | 26  | <a href="#">24561.0220</a> |
| 25                       | M 6            | 15                                       | 22,5   | 11,0                   | 58  | <a href="#">24561.0225</a> |
| 32                       | M 8            | 18                                       | 29,0   | 14,5                   | 116   | <a href="#">24561.0232</a> |
| 40                       | M10            | 22                                       | 37,0   | 18,0                   | 241   | <a href="#">24561.0240</a> |
| <b>Alumiini Al</b>       |                |  |        |                        |   |                            |
| 16                       | M 4            | 8  | 15,0   | 7,0                    | 16  | <a href="#">24561.0116</a> |
| 20                       | M 5            | 12                                       | 18,0   | 9,0                    | 26  | <a href="#">24561.0120</a> |
| 25                       | M 6            | 15                                       | 22,5   | 11,0                   | 58  | <a href="#">24561.0125</a> |
| 32                       | M 8            | 18                                       | 29,0   | 14,5                   | 116   | <a href="#">24561.0132</a> |
| 40                       | M10            | 22                                       | 37,0   | 18,0                   | 241   | <a href="#">24561.0140</a> |
| 50                       | M12            | 27                                       | 46,0   | 21,0                   | 475   | <a href="#">24561.0150</a> |

## Sovellusesimerkki



## Vaatimuksenmukaisuus

Tarkat sopivuustiedot nähdäksesi valitse haluttu tuotenumero.